



\$17,135,759

Monthly benefits issued



Average SNAP benefit:

\$4.30

a day (per person)



70,000+

Active SNAP participants



17%

of Montgomery County residents are food insecure (SNAP, Montgomery County, 2018)



Percent of population enrolled in SNAP:

12.8%

Percent of population below 100% FPL enrolled in SNAP:

80.5%



Average monthly benefit issued per participant:

\$251.72



Access

36%

of population has low access to store

34%

of children have low access to store

3%

of population have households, no car & low access to store

10%

of population has low income & low access to store



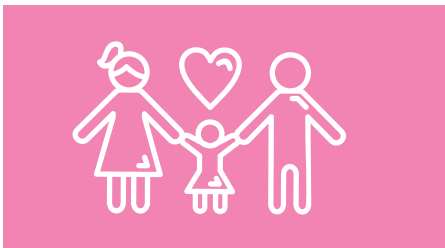
Public Health
Prevent. Promote. Protect.

Dayton & Montgomery County



The Supplemental Assistance Nutrition Program (Snap) is the largest food assistance program in Montgomery County, supplementing personal food budgets to help individuals and families move towards self-sufficiency. *SNAP benefits the Montgomery County community in a variety of ways, including:*

Benefits to Children & Families



SNAP helps children improve academic success and overall health, and reduce obesity.



Pregnant women need help accessing healthy food more than any other social service resource in Montgomery County.



A healthy diet reduces risk for heart disease, high blood pressure, diabetes, osteoporosis, and certain types of cancer. SNAP allows families the opportunity to buy fresh and healthy foods.

Benefits to Farmers



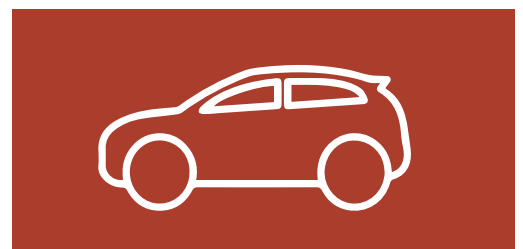
More opportunities to sell produce. All SNAP participants are eligible for Produce Perks, which provides a \$1 for \$1 match for families when spent on vegetables and fruit.

Benefits to Economy



Every SNAP dollar generates \$1.50 in local economic activity. (USDA, Economic Research Service, July 2019)

Benefits to Environment



Future SNAP expansion including expanded options for curbside delivery, as well as grocery delivery, would increase access to healthy foods for SNAP participants that live in food deserts

CONTACT

Haley Caretta
Food Systems Project Manager
Hcaretta@phdmc.org
937-496-3308



Dayton & Montgomery County